



Priory Road NW6

Parkheath  
*Sold on Service*





## Priory Road, NW6, £850,000, Leasehold - Share of Freehold

### Camden Band F

- Classic 2 bedroom 2 bathroom period apartment
- Bright and spacious dual aspect 19'8 reception room
- 882 sq ft / 82 sq m
- South facing master bedroom with en-suite bathroom and dressing room
- Further double bedroom with bay window
- Set within beautiful detached house
- South Hampstead conservation area location
- 5 minute walk to West Hampstead transport hub (Jubilee, Thameslink and Overground lines)
- Access to basement storage and off-street parking
- Share of Freehold and Chain free



Belsize Park  
208 Haverstock Hill  
NW3 2AG  
Sales 020 7431 1234  
Lettings 020 7431 3104  
nw3@parkheath.com

South Hampstead  
8a Canfield Gardens  
NW6 3BS  
Sales 020 7625 4567  
Lettings 020 7644 0800  
nw6@parkheath.com


West Hampstead  
192 West End Lane  
NW6 1SG  
Sales & Lettings  
Tel 020 7794 7111  
192@parkheath.com

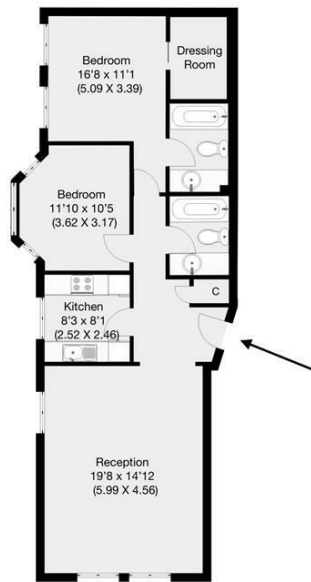
Kentish Town  
148 Kentish Town Rd  
NW1 9QB  
Tel 020 7485 0400  
kt@parkheath.com

Kensal Rise  
54-56 Chamberlayne Rd  
NW10 3JH  
Tel 020 8960 4845  
kensal@parkheath.com

Property Management  
148 Kentish Town Rd  
NW1 9QB  
020 7433 6174  
pm@parkheath.com

**Parkheath**  
*Sold on Service*

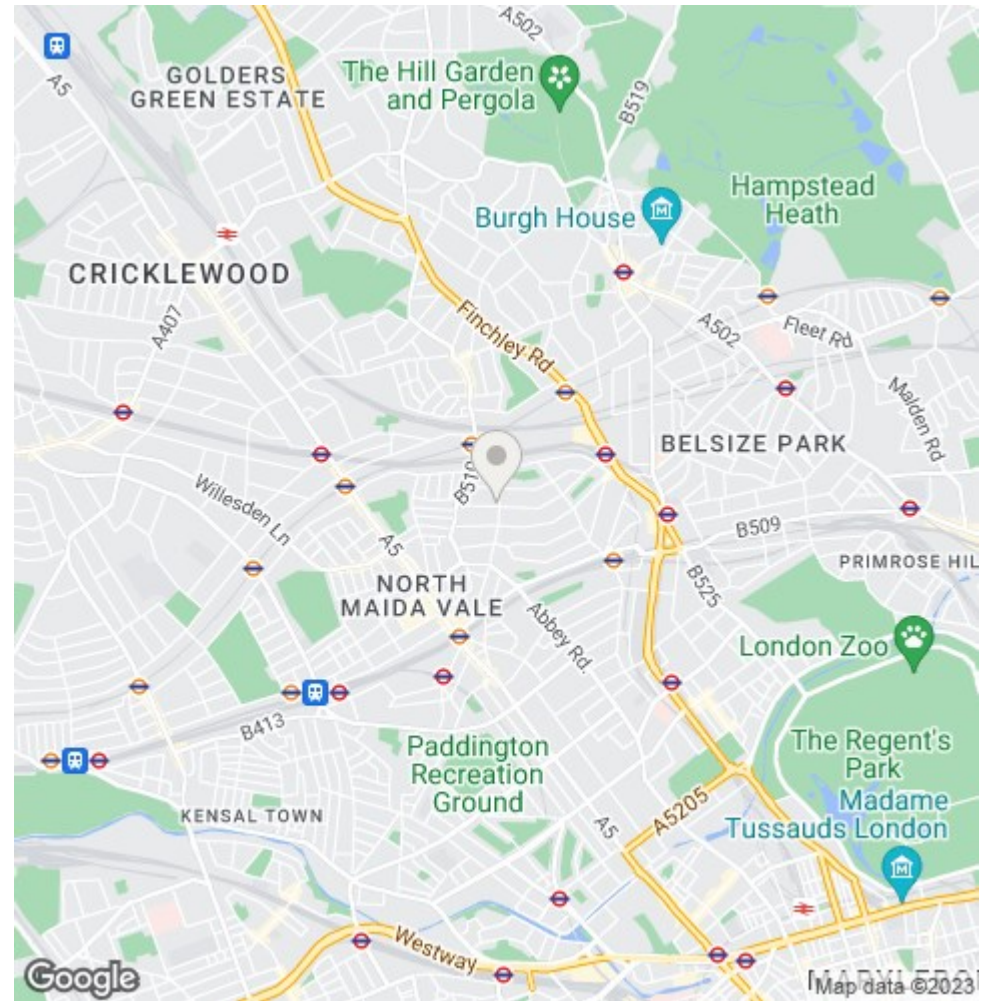
  
**Priory Road, London, NW6**  
 Approximate Gross Internal Area 82 sqm / 882.6 sqft



Second Floor

THIS FLOOR PLAN IS PRODUCED FOR PARKHEATH SUBMITTED BY ARCHIMEDIA web: www.archi-media.co.uk

Whilst every attempt has been made to ensure the accuracy of the floor plan contained here, measurements of doors, windows and rooms are approximate and no responsibility is taken for any error, omission or misstatement. These plans are for representation purposes only and should be used as such by any prospective buyer or lease. Specifically no guarantee is given on the gross internal floor area of the property if quoted on this plan and any figures given is initial guidance only and should be treated as such.



The particulars do not constitute part of an offer or contract. The particulars, including text, photographs and plans, are for the guidance only of prospective purchasers/tenants and must not be relied upon as statements of fact. The descriptions provided therein represent the opinion of the author and whilst given in good faith should not be construed as statements of fact. Nothing in these particulars shall be deemed a statement that the property is in good condition or otherwise or that any services or facilities are in good working order. All measurements are approximate